

Anti-IL31RA hlgG1 Antibody(NA633)

Product information

GM-50880AB-10	10 µg
GM-50880AB-100	100 µg
GM-50880AB-1000	1 mg

Antibody Information

Species Reactivity	Human; Cynomolgus;
Clone	NA633
Source/Isotype	Monoclonal human IgG1, κ
Application	Flow cytometry; Block assay
Other Names	CRL, CRL3, GLM-R, GLMR, GPL, IL-31RA, PLCA2, PRO21384, hGLM-R, zcytoR17
Gene ID	Q8NI17-1 (human);CN101939424(A) (Cynomolgus)
Storage	Store at 2-8°C short term (1-2 weeks).Store at ≤ -20°C long term. Avoid repeated freeze-thaw.
Formulation	Phosphate-buffered solution, pH 7.2.
Endotoxin	< 1 EU/mg, determined by LAL gel clotting assay

Data Examples

Flow cytometry

H_IL31RA HEK-293 Cell Line (Catalog # GM-C25995) was stained with Anti-IL31RA hlgG1 Antibody(NA633) or isotype control antibody.

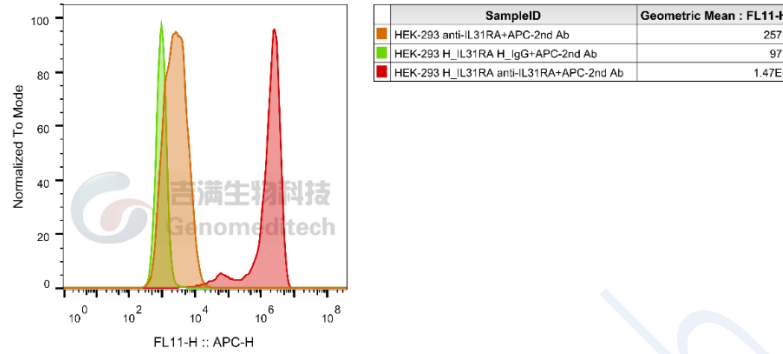


Fig. FACS

Flow cytometry

Cynomolgus_IL31RA CHO-K1 Cell Line (Catalog # GM-C25996) was stained with Anti-IL31RA hlgG1 Antibody(NA633) or isotype control antibody.

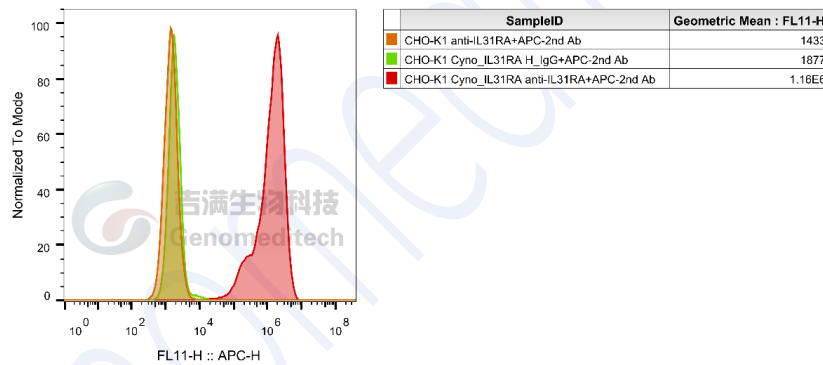


Fig. FACS

Block assay

Anti-IL31RA hlgG1 Antibody(NA633) inhibits H_IL-31 Reporter Cell Line (Catalog # GM-C25989) Luminescence induced by Recombinant Human IL 31.

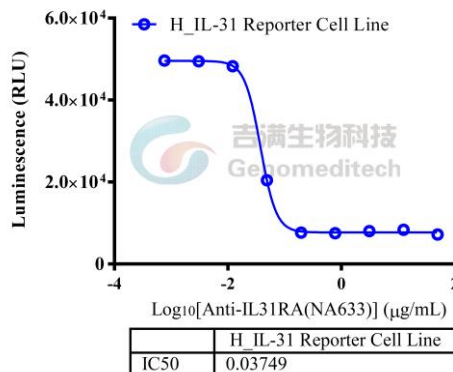


Fig. assay

Version:0.3.2.240521